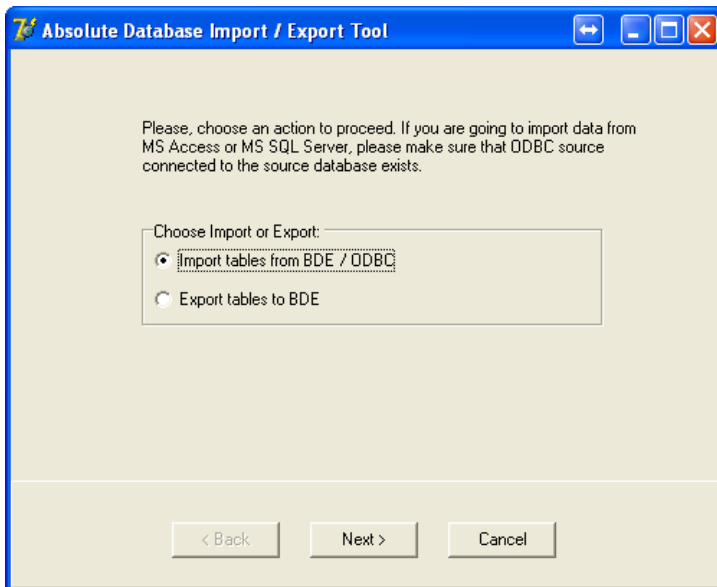
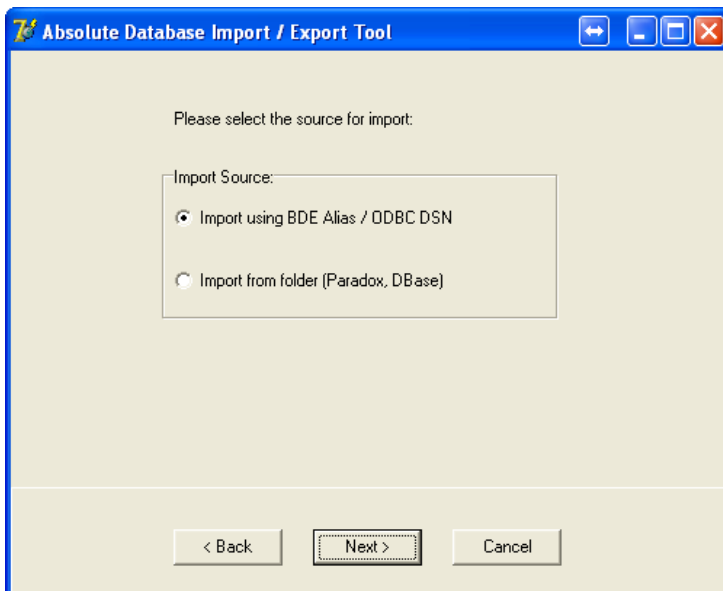


Import Existing Data into new Winari Database

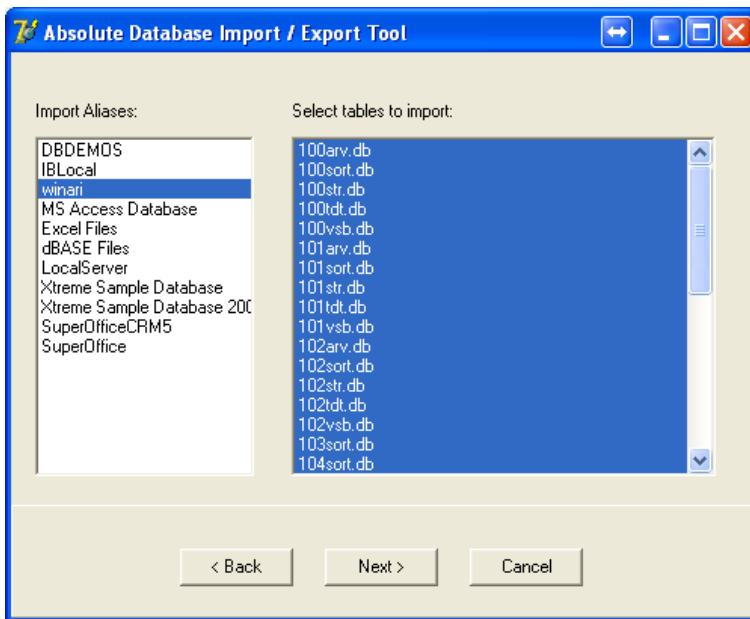
If there are upgrading Winari and have already winari data you need to import existing data into the new data base that is done with the program DBimportexport.



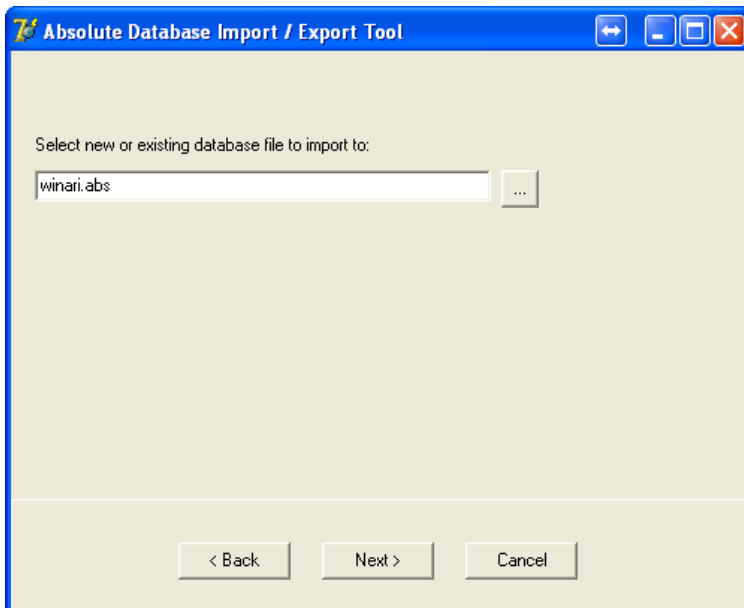
Choose Import tables from DBE/ODBC and press Next.



Choose Import using DBE Alias / ODBC DSN and press Next.



Choose winari as import aliases and select all tables to import and press Next.



Write winari.abs in the database file field and click Next.

The program will now import all winari data into database.

Click Finish.

Now the data will be accessible in winari.