

Networking A PC to a Macro Counter

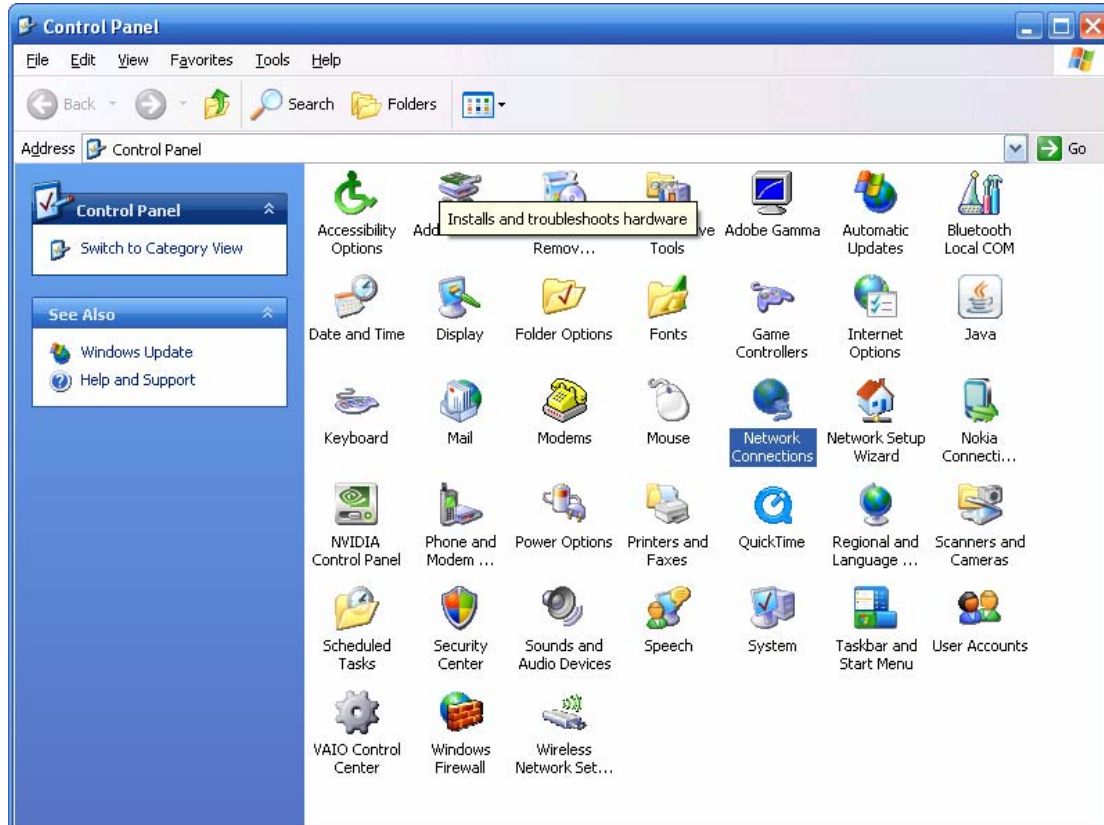
In order to network a PC to the Macro counter you will need the following components...

- A Laptop or PC with an RJ45 10/100 network port
- VAKI Macro network cable
- Male to male RJ45 gender adapter
- Twisted (or 'crossover') LAN Cable
- A USB keyboard
- VAKI Macro USB adapter

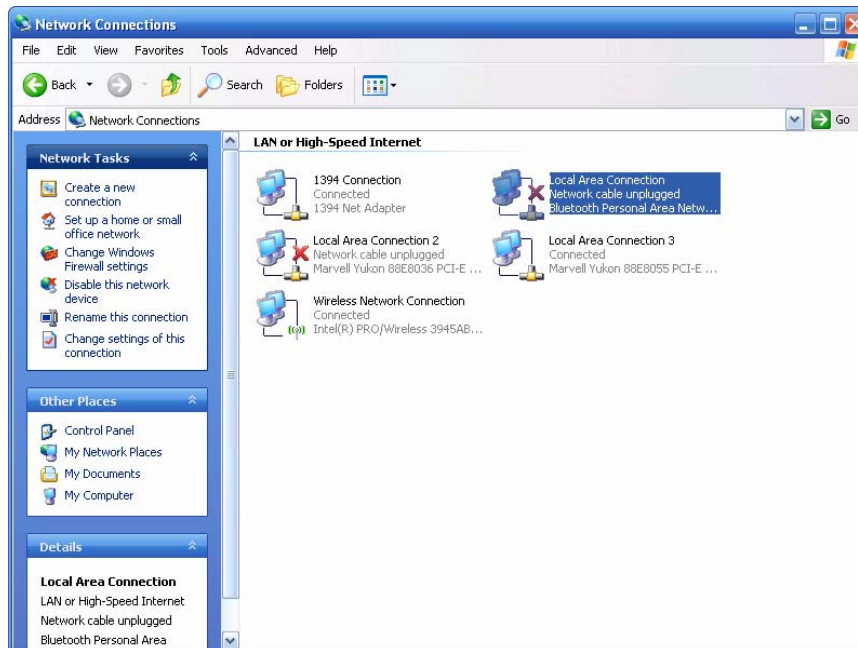
In order to get the laptop PC to talk to the Macro PC you need to assign unique IP addresses to both. There are various systems of IP numbering in use, but the most common for internal networking is to use the 192.168.1.### system, (where ### is a number between 0 and 255) It is critical that all components on the network have unique IPs or there will be a conflict..

To set the unique IPs, do as follows on Windows XP....

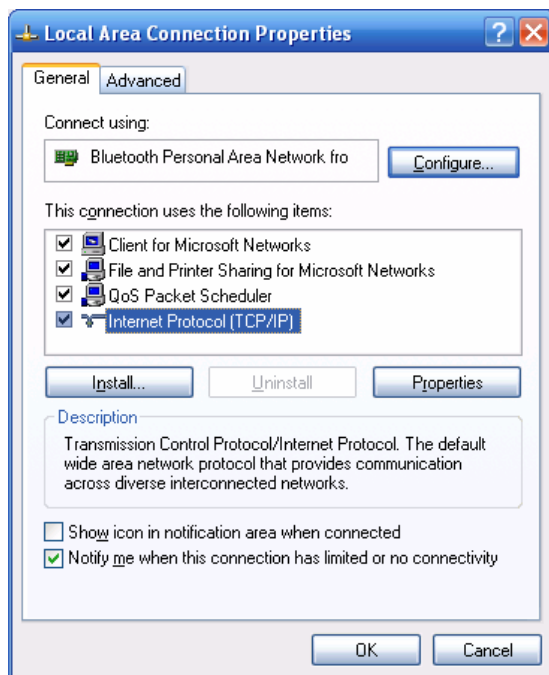
- 1) Connect the Macro using the network cable, adapter and twisted LAN cable to the network port on your PC
- 2) Go to **Start , Control Panel ,** then select **Network Connections**



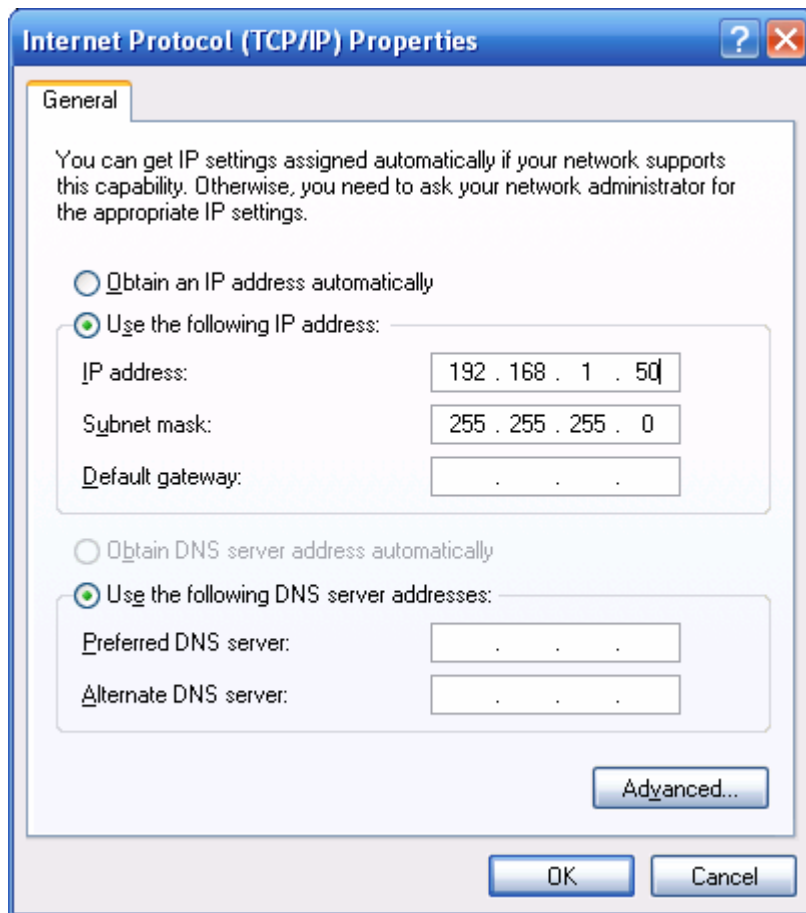
3) Right click on **Local Area Connection** Then click **Properties**



4) Click on **Internet Protocol (TCP/IP)** then click the **Properties** button



5) Select **Use the following IP address**, then enter the address you want to use. Here the address 192.168.1.50 has been entered. WinXP will automatically set the subnet mask. Click OK

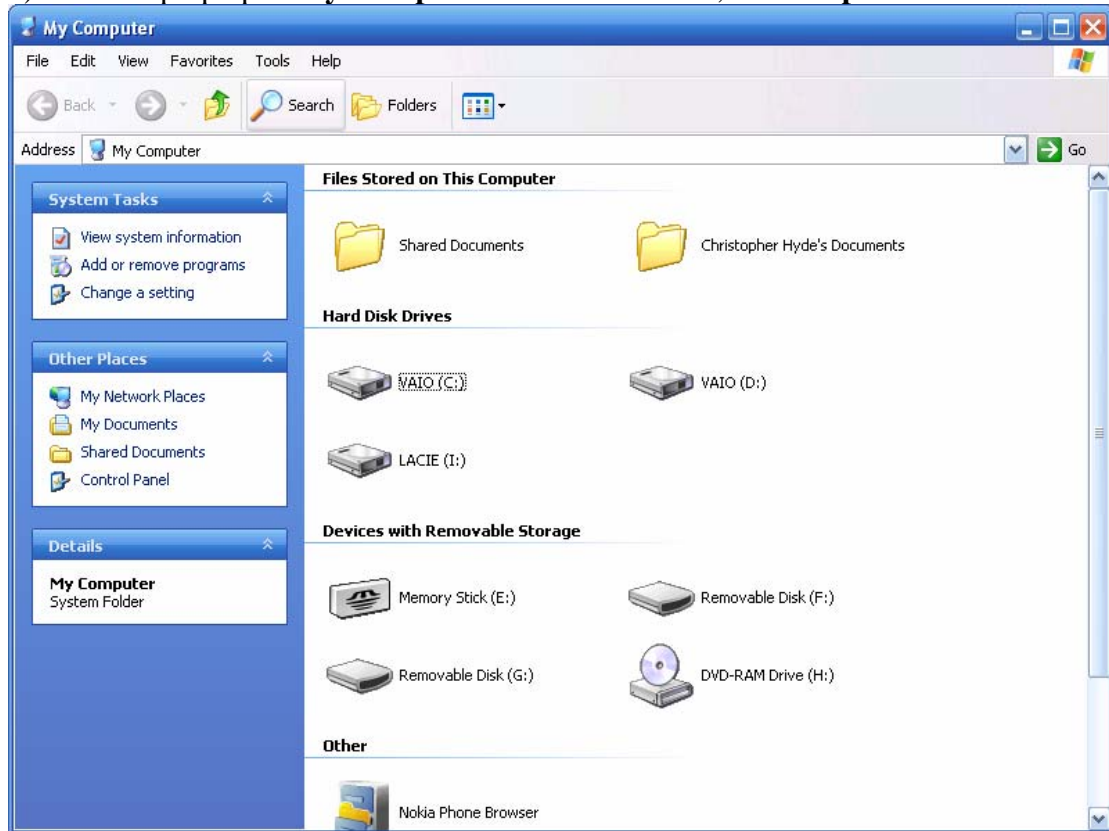


6) Carry out the same process on the Macro computer. On Windows 98 machines you will see a list of network cards then protocols on the Network properties window.. You need to select the **TCP/IP protocol for the 10/100 Network card** (select Fast NIC if there is a choice). Assign the Macro a different IP from the one you have used for the laptop – for example use 192.168.1.99. You will need to enter the subnet mask manually.

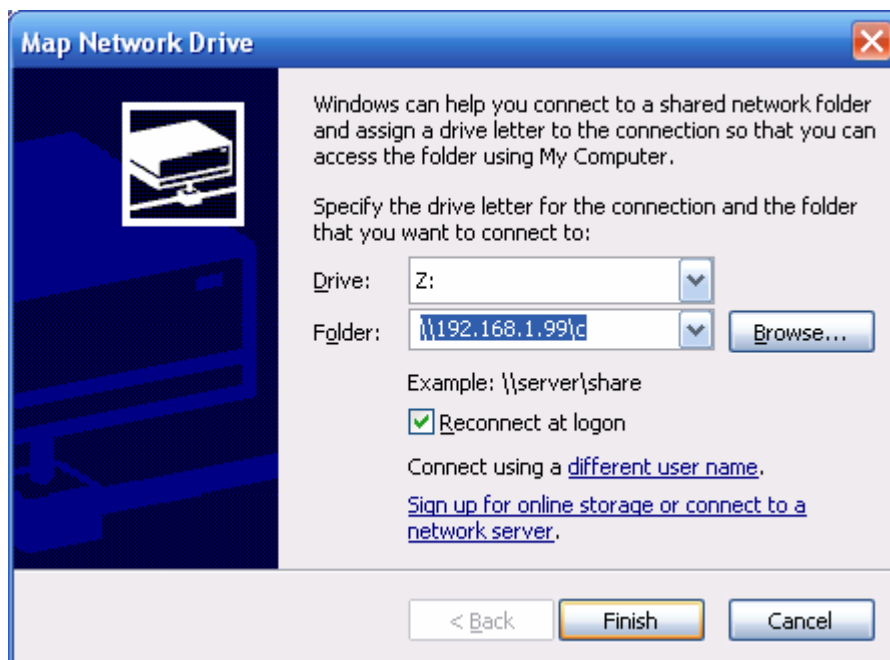
7) Make sure the hard drive on the Macro is shared. On the macro PC go to **My computer**, then right click on the C Drive and select **Properties**. Select **Sharing** then **Share As** and make sure it is shared as C.

8) Restart the Macro counter

9) On the laptop open **My Computer** then select **Tools**, then **Map Network Drive**



10) Windows will automatically select a drive letter for you. You need to enter a double backslash then the IP address that you have assigned to the Macro (in this case 192.168.1.99) then the drive letter of the hard drive on the Macro (In this case the drive is shared as "C"). Hit Finish.



11) A window should appear almost immediately on the laptop screen showing the contents of the Macro C Drive. You can now move files from the Laptop onto the Macro head easily and vice versa.

Other points

If you cannot get the laptop and Macro to talk check the following...

- Restart the Macro (particularly if its Windows 98) -you may need to do this 2 or 3 times before it establishes its network connection properly.
- Disable firewalls and anti virus software on the laptop – there should not be any on the Macro
- Make sure the Network is communicating properly. Check this on the laptop by going into Network Connections from Control Panel. Look at the Local Area Connection. It should say Connected underneath it and there should be no red cross on the line. If the network is not working you need to check the cable is correct
- Make sure the IP addresses are on the same ‘domain’ which means that the first 3 sets of numbers are the same. In this example both should start with 192.168.1.
- Make sure the IP addresses are unique

The Macro software is contained in the directory called **ORI**. The software is called Oripassin. If you are updating the software you will need to copy the old version to another directory and then copy the new version to the ORI directory.

The Macro keeps all its data files from counts in the directory called Reports. If you want to take data off the macro you will find that each count has 2 files associated with it – one .blb file and one .mse file. You will need both of the files if you want to open the data on another PC. You can use the program RemoteC to open these files.